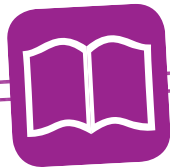


# ANALYZE



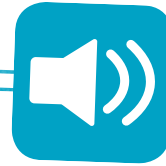
## DEFINITION:

To look at information very carefully so you can explain it



## SYLLABICATION:

an-a-lyze



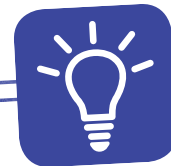
## SENTENCE:

We need to *analyze* the word problem more carefully.



## WHAT DO YOU ANALYZE?

Reading, math problems, science experiments, historical documents

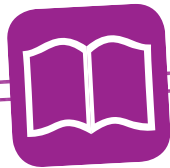


# DESCRIBE



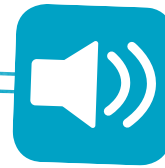
## DEFINITION:

To explain the details about something



## SYLLABICATION:

de-scribe



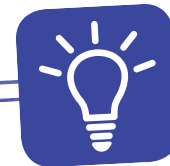
## SENTENCE:

I would *describe* the weather as very hot and dry.



## WHAT DO YOU DESCRIBE?

Characters, how you solved a problem, places in our classroom



# JUSTIFY



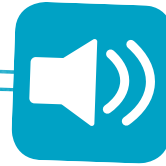
## DEFINITION:

To prove to be right



## SYLLABICATION:

jus-ti-fy



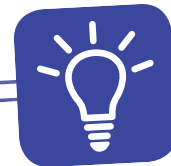
## SENTENCE:

I can *justify* my answer by showing my work.



## WHAT DO YOU JUSTIFY?

Opinions,  
answers, writing

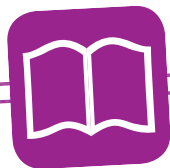


# DETERMINE



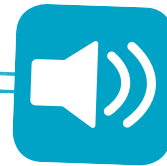
## DEFINITION:

To decide  
by choice of  
alternatives or  
possibilities



## SYLLABICATION:

de-ter-  
mine



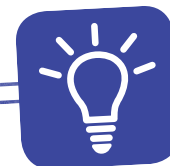
## SENTENCE:

Reading this  
story helped me  
*determine* that I  
love mysteries.



## WHAT DO YOU DETERMINE?

Story themes,  
science  
observations,  
math answers

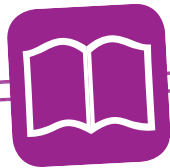


# EVIDENCE



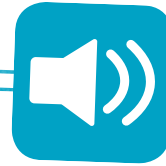
## DEFINITION:

Information and facts that tell you if something is true



## SYLLABICATION:

ev-i-  
dence



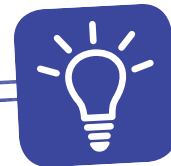
## SENTENCE:

The *evidence* from the science experiments proves this to be true.



## WHAT DO YOU USE EVIDENCE FOR?

Science experiments,  
writing

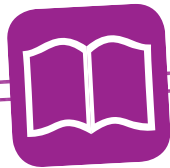


# INTERPRET



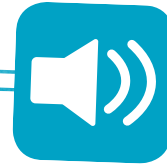
## DEFINITION:

To explain the meaning of



## SYLLABICATION:

in-ter-pret



## SENTENCE:

Can you *interpret* what this reading passage means?



## WHAT DO YOU INTERPRET?

Story themes,  
math word problems

